

## Welcome to RAF Bentwaters



### THE WING

The 81st Tactical Fighter Wing's mission is to prepare for and conduct all-weather tactical air operations as directed and, as a unit of USAFE, support the capability of NATO. The 81st TFW's three tactical fighter squadrons - the 91st (Blue Streaks) and 92nd (Avengers) at Bentwaters and the 78th (Bushmasters) at Woodbridge - fly the supersonic F-4 Phantom II.

The 81st TFW was initially activated as the 81st Pursuit Group February 9, 1942 at Morris Field, North Carolina. From February through October of that year, the group attained flying proficiency on the P-39 Airacobra and began preparations for the move to North Africa eventually accomplished in November and December of 1942.

January 22, 1943, the 81st flew its first combat mission, a low level strafing sweep over the Ousseltia Valley from Thelepte, Tunisia. Several months of intense action followed and in the first three months of 1943 the group suffered the loss of 21 pilots, mostly in action at the Kasserine Pass, Tunisia. During this period of heavy action, on April 1, 1943, the Lockheed P-38 Lightning was added to the wing inventory.

The Winter of 1943 found the group operating from airfields in Southern Italy and during that year of combat the following battle streamers were added to the group's guidon: Algeria/French Morocco, Tunisia, Sicily, Anzio, Naples-Foggia and Rome-Arno. Unexpectedly, the 81st was pulled out of Italy and sent to Karachi, India. By March 1944, 81st airmen were flying newly assembled P-47s over the now famous "Hump of China".

Continuing their diversified activities, the group flew escort for the B-29s pounding the Japanese. When a major offensive was launched against the allies in 1945, the 81st helped stem the Japanese tide by flying close air support and bomber escort missions. During this period the group earned four more battle streamers for India-Burma, China Defense and Offensive, and Japan Air Offensive. With the surrender of the Japanese, the 81st remained on occupation duty in China until December 27, 1945, when the unit was deactivated.



The 81st was reactivated on October 15, 1946, at Wheeler AFB, Hawaii. Initially equipped with North American P-51 Mustangs, it converted to the F-47N on February 1, 1948. In 1949 the group moved to Kirtland AFB, New Mexico and started conversion to the U.S. Air Force's first operational jet fighter, the Lockheed F-80 Shooting Star. But, by September, the group was busy with the transition to the North American F-86A Sabrejet, and by January 21, 1950, it had a new mission and a new name that reflected that change: it emerged as the 81st Fighter Interceptor Group. On April 18, 1950, the group moved to Larson AFB, Washington. At Larson, the 81st became part of the Air Defense Command.

The 81st FIG was reassigned to the United Kingdom in August 1951. The group was the first F-86 aircraft unit assigned to NATO and the first foreign air force to participate in the air defense of Great Britain. In April 1954 the unit was converted to F-84F "Thunderstreak" aircraft and the group was redesignated the 81st Fighter Bomber Wing.

Spring of 1955 found the wing's three fighter squadrons scattered over three different World War II bases, with the 91st at Bentwaters, the 78th at Shepherd's Grove and the 92nd at Manston. This situation changed in 1957 with the acquisition of RAF Woodbridge and the eventual relocation of the 78th to that base and the 92nd to Bentwaters. This move was completed in December 1958.

It was also in 1958 that the 81st Fighter Bomber Wing began conversion to the F-101 aircraft while maintaining a combat ready posture in F-84 aircraft. Consequently, the wing was re-named the 81st Tactical Fighter Wing July 7, 1958. The first five "Voodoos" assigned to the wing arrived at Bentwaters December 4, 1958. The Voodoo was with the 81st TFW for seven years.

"Phantom" F-4C aircraft replaced the F-101s in October 1965 and remained the wing's principal weapon system through the early 1970's. The 78th Tactical Fighter Squadron, flying from RAF Woodbridge, converted to the F-4D model in 1969 and the conversion of the 91st and 92nd Tactical Fighter Squadrons to this model was completed in November 1973. The F-4D is the only aircraft currently assigned to the wing.

## THE TWIN BASES

RAF Bentwaters was the last RAF Station activated during World War II. From its activation November 22, 1944 to the end of the war, RAF Bentwaters was the home of No. 11 Group, RAF Fighter Command. The mission of No. 11 Group was to provide fighter escort aircraft for daylight bombing operations conducted by RAF Bomber Command. Following hostilities Bentwaters functioned as an RAF pilot training establishment until 1949. Two years of inactivity followed until the base was occupied by the 81st Tactical Fighter Wing September 9, 1951.

Woodbridge, located two air miles or seven road miles to the east of Bentwaters, is a more compact base and its runway is a bit longer. It was also built during the war and used as an emergency landing field for crippled Allied bombers and fighters returning from missions over Europe.

## 67TH AEROSPACE RESCUE AND RECOVERY SQUADRON

The 67th Aerospace Rescue and Recovery Squadron (67th ARRS) is one of seven rescue squadrons located around the world to provide theater commanders a combat and peacetime rescue capability. As the world's largest rescue squadron, they are charged with the responsibility for an area that stretches from the North to the South Pole and from the Mid-Atlantic to the borders of Burma - an area of approximately 68,000,000 square miles.

The approximately 260 men and women of the 67th ARRS work with and support the airborne team of seven HC-130 "Hercules" and five HH-53 "Super Jolly Green Giant" helicopters. With the ability to work at low altitudes plus a high altitude dash capability and a range in excess of 4,000 nautical miles, the Hercules has become the ideal tanker/escort companion for the HH-53. The air refuelable 42,000 pound Super Jolly Green Giant is the largest and fastest helicopter in the Air Force inventory.



In addition to these duties, the 67th ARRS has the primary recovery responsibility for Atlantic and Indian Ocean splashdowns of NASA space endeavors. The squadron has served on all Apollo missions in the past.

The day to day operations of the squadron are dedicated to a goal shared by all members of the rescue fraternity, best summed up by their creed and motto: "It is my duty as a member of the AEROSPACE RESCUE AND RECOVERY SERVICE to save life and aid the injured. I will prepare at all times to perform my assigned duties quickly and efficiently, placing these duties above personal desires and comforts. THESE THINGS I DO THAT OTHERS MAY LIVE."

#### HOUSING

Being immediately eligible for government family quarters presents a fairly simple packing problem, for by now you know the size of your quarters, and what is standard equipment in these quarters. Planning for a move which includes residing in surrounding communities is more complex, but here again we have tried to anticipate your needs. Approximately 1,500 families live in the surrounding communities.

As is the case with most major bases in the United Kingdom, there are a limited number of government quarters, with the bulk located at RAF Woodbridge. The 257 units at Woodbridge and 68 at RAF Bentwaters are occupied by both NCOs and Officers. Most of the Command and Key personnel reside at RAF Bentwaters. The Housing Office also has control of 283 government-leased and 160 rental guarantee quarters at various locations within easy driving distance of the twin-base complex. Under the Rental Guarantee Housing project Air Force tenants pay their own rent, rates (taxes) and electricity charges, leases are also signed between individuals and landlord. Personnel living in these quarters draw BAQ and HOLA, which varies according to rank.

Eligible personnel can be placed on the waiting list for Family Housing prior to arrival. This is accomplished by submitting DD Form 1746, Application for and Assignment to Military Family Housing, with a copy of PCS orders to the Housing Office. Members coming from either Remote or Consecutive Overseas Tours will receive credit for that tour on the waiting list. Most of the eligible personnel will have the opportunity to live in government controlled family housing during their tour, however, the waiting period will vary from 6 to 26 months.

Personnel with families coming to the United Kingdom are authorized to bring full Joint Travel Regulations weight allowance. On-base and government-leased quarters are furnished with stove, refrigerator, washer and dryer. Rental Guarantee quarters are furnished with stove and refrigerator only. Your own furniture will be utilized in government quarters. Furniture loaner sets are available for a period of 90 days. All On-base and Rental Guarantee quarters are wired for both 120 and 240 volts.

Temporary Lodging Allowance (TLA) is provided to all incoming married personnel with approved concurrent travel, and single airmen when there is no barracks space. Limited on-base transient family quarters are available at Bentwaters. TLA and your actions to locate and occupy economy quarters as quickly as possible are closely scrutinized and you will have to report to the Housing Referral Office every ten days for progress checks. Your sponsor should be able to provide you with transportation to assist you in getting settled as quickly as possible.

#### MEDICAL FACILITIES

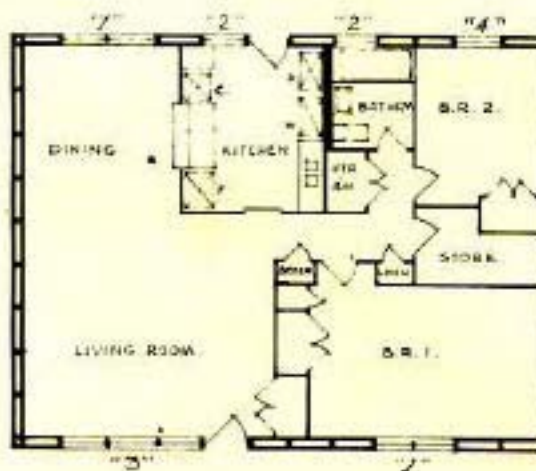
USAF CLINIC. The USAF Clinic Bentwaters is an Outpatient Family Practice Medical Organization. The Clinic has specialists in Aerospace Medicine, Internal Medicine, Pediatrics, Psychology and Optometry. There are no hospital beds and X-ray/laboratory support etc. is limited. The clinic serves primarily to manage the day-to-day acute needs of a basically healthy population.



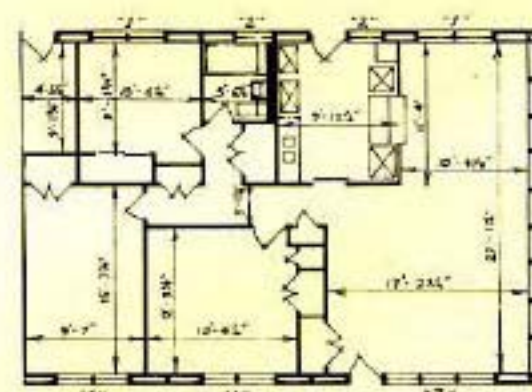
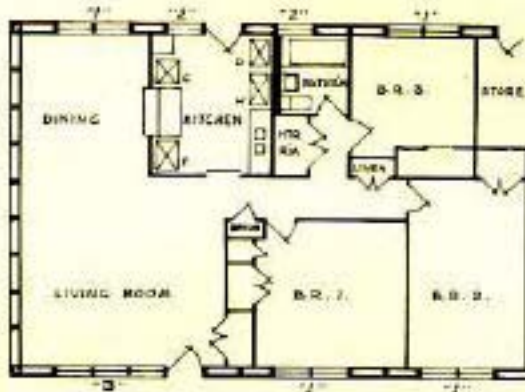
### FAMILY QUARTERS

Shown below are two examples of duplex family quarters of two-bedroom and three-bedroom type. They are known locally as "Tobacco Housing". Kitchens are equipped with stoves (C), refrigerator (F), washing machines (W) and driers (D). Wiring is for both 110 and 220 volts so that transformers are not needed. Numbers against the windows indicate sizes: 1 = 51 in high by 72 in wide, 2 = 39 1/2 x 35 in, 3 = 37 1/2 x 127 in, 4 = 51 x 35 1/2 in. Floor to window top is normally 84 in.

#### 2 BEDROOM



#### 3 BEDROOM





Patients who develop serious or complicated medical/surgical problems are referred to USAF Hospital Lakenheath (one hour, 15 minute drive) or a local British civilian hospital (30 minutes drive), depending on the urgency of the problem. Pregnant females are followed pre-natally by our practitioners, but are admitted to USAF Hospital Lakenheath when the baby is due.

DENTAL SERVICES. We have dental clinics located on both bases. The dependent dental care program is designed to enable the family that arrives in excellent dental health to remain that way and those that are in need of extensive treatment to leave the theater in an improved condition. Services generally available include oral examinations, temporary fillings and treatments, permanent fillings, dental prophylaxis and fluoride treatments, oral pathology services, necessary X-rays, orthodontic consultations, surgery, preventive dentistry instructions and certain types of periodontal (gum) disease treatments.

VETERINARY SERVICE. Is limited by American-British Status of Forces Agreements. Small animal care, therefore, is severely restricted. Other than providing immunizations, custom clearance evaluation, and treatment for infectious disease, our Vet is prohibited from treating your pets. Veterinary services will assist you in obtaining British veterinary care if needed. Also, animals entering England must be quarantined six months on the economy. The typical cost to transport a small cat from the East U.S. coast to London and quarantine it six months is \$400. You are well advised not to bring a pet to England.

FLIGHT MEDICINE. Members on flying status are reminded to clear in with the Flight Surgeon's Office as soon as possible, in order to process AF Form 1042 and remain on status.

APPOINTMENTS & EMERGENCIES. All clinic services operate from 0800 - 1630 hours weekdays. Patients are seen by appointment in all clinics. The number to call is:

Central Appointments: Medical..... Bentwaters 2446  
Dental..... Bentwaters 2180  
Vet..... Bentwaters 2523

Emergency services, of course, are available at the clinic 24 hours a day. These services are available for acute illness and injuries requiring medical attention without delay. The Emergency Room phone number is also 2446. If you anticipate utilizing emergency services, please call first if possible and we will try to be best prepared; also we can give you advice enroute and occasionally we may be able to solve the problem over the phone.

AMBULANCE SERVICE. Ambulance service is provided for bonafide emergencies on base by calling the Emergency Room (2446). If you are off base and need an ambulance, call us - we may be able to dispatch ours, if not we will assist you in obtaining British Ambulance Service. Please don't debate our decision on military versus British ambulance service since you will be wasting time during an emergency. You must understand that we cannot provide ambulance coverage for the 1,000 square miles around the bases where many of our people live; we are the ambulance service primarily for on base and off base is secondary, when possible.

CHAP. We are also the information center for the CHAP Program - Children Have A Potential. If you have a child mentally, physically or emotionally handicapped, you should check with your CHAP Officer at your present base to determine the adequacy of facilities at Bentwaters for the particular problem of your child and complete AF Form 1466 accurately. The facilities available on the base here and on the civilian economy are somewhat limited, and it is imperative that clearance be obtained prior to movement. Each case will be considered on an individual basis.

SPECIAL WORDS OF CAUTION. Finally, a very important word to those of you in CONUS preparing for PCS to USAFE. Do not underestimate the importance of AF Form 1466, Clearance for Overseas Dependent Travel, which is completed by you, your CBPO and your current medical officer. Be honest on that form; if one of your dependents has a medical problem or special educational needs, say so. All that happens then is that the USAFE Surgeon insures



the support your family needs is available before you move them to USAFE. When in doubt ask that your dependent's records and needs be reviewed in USAFE first; don't allow the doctor or Personnel Officer to convince you, "Yes, your child has a special need, but I am sure it will be available in England." That is not necessarily so and we have seen many a family inconvenienced by such reasoning.

## OVERSEAS ORIENTATION

Each individual assigned to RAF Bentwaters/RAF Woodbridge must attend an Overseas Orientation briefing within 15 days of his arrival. New arrivals will be scheduled by the CBPO during in processing. Dependents are also encouraged to attend this informative briefing.

## EDUCATION

DEPENDENT SCHOOLS. Dependent schooling for the first through the twelfth grades is provided. Both the elementary and high schools are located at RAF Woodbridge. A free Kindergarten is operated on both RAF Bentwaters and Woodbridge. To qualify for Kindergarten enrollment, a pupil must be 5 years of age by 31 December of the current school year. Kindergarten is not required for admission to first grade.

School bus routes are established for personnel residing in the off-base communities. Sponsors of students residing outside the operating limits of these routes will be required to furnish their own transportation to school or the nearest pickup point on the established school bus route.

School cafeterias are operated by the Army Air Force Exchange Service. Hot lunches are served daily, using a varied menu.

EDUCATIONAL OPPORTUNITIES. The Bentwaters/Woodbridge Education Center offers a wide range of educational opportunities. Five colleges and four universities are conducting certificate, undergraduate and graduate level courses. A high school diploma program is available. Professional educational counseling may be obtained at both the Bentwaters and Woodbridge Education Centers. A high school and college level comprehensive testing program is conducted. Base level management courses are offered and military professional courses by correspondence (ECI) are available. Vocational/Technical courses are also offered.

The schools conducting these programs are Harford Community College which offers an eight course program in Law Enforcement/Criminal Justice. City Colleges of Chicago offers a variety of courses in Real Estate, Mid-Management, Office Skills and Data Processing. A&P and FCC courses are available through Embry-Riddle Aeronautical University. University of Nebraska at Omaha conducts undergraduate courses in Urban/Ethnic Studies and Criminal Justice. Undergraduate courses are also available through the University of Maryland. George Peabody College for Teachers offers a Master of Science and a Specialist in Education in Human Development Counseling and Troy State University offers a Master of Science in Management. The University of Alabama offers a Master of Science Program in mechanical engineering. Portland Central High School offers the High School Completion program. El Paso Community College offers a variety of General Education Classes.

## NURSERIES

Bentwaters has a full-time nursery available. The nursery has an indoor and outdoor play area, with slides, swings, playhouses and a stock of toys to occupy the children. There is a TV for watching children's shows, and a library of children's storybooks. Necessities such as high chairs, cribs, cots, etc., are readily available. All meals with snacks in between are served at a nominal fee, and the overall charge for the child care is quite inexpensive. Age limits for usage of the nurseries are six months through 10 years.



## AIR FORCE POST OFFICE

The RAF Bentwaters Air Post Office is operated by people assigned to Operating Location 0B05, 7025th Air Postal Squadron with headquarters located at Rhein-Main AB, Germany, and intermediate headquarters at RAF High Wycombe, England. All services provided by state-side Post Offices are provided by this APO with the exception of COD service and Special Delivery Service.

Mail is received once daily, Monday through Saturday, from the London Aerial Mail Terminal. Mail is dispatched once daily Sunday through Friday at 1530 hours. Boat mail is usually received approximately four times per month.

In answer to questions frequently asked by our patrons, the following information is provided:

**SAM Service - (Space Available Mail).** Parcels weighing up to 70 pounds using the 4th class parcel post rate. These travel by air to New York and then by surface means to final destination.

**PAL Service - (Parcel Air Lift).** Parcels weighing 30 pounds or less using 4th class parcel post rate plus \$1. These travel by air to final destination. PAL parcels must not exceed 60 inches in length and girth combined. (Measure parcel all the way around its middle and add to that figure its longest length.) SAM, AIR MAIL and BOAT MAIL parcels are restricted to a maximum weight of 70 pounds and a maximum size of 100 inches length and girth combined.

White custom tags are required on all SAM and PAL packages. Green custom tags are required on all Air Mail packages or parcels too small to support the large white custom tag. Custom tags are not required on undeveloped film sent to a commercial developer. U.S. Customs officials have assured us that undeveloped film can be inspected without harm or damage.

The signature of the mailer is required directly under the return address on all parcels mailed at the APO. Mail addressed to an international address (Germany, France, Spain, etc) requires British postage.

**Claim Service -** If your parcel was damaged in handling by the Post Office and it was insured, bring it in to the APO and file a claim for damages. This is your right. Claims may be filed up to one year from the date the article was mailed. When you have a claim, bring the damaged article to the APO along with the wrapper from the parcel to include the addressee and addressor, postage and proof of insurance.

Mail Transit Times - Air Mail parcels - 3 to 5 days  
 First Class letters - 5 to 7 days  
 SAM Parcels - 10 to 12 days  
 PAL Parcels - 5 to 7 days  
 BOAT Mail (4th Class) - 4 to 6 weeks  
 All Classes - 3 to 5 days here to continental APOs  
 \*\*Note: all times are approximate

Remember, this is your APO, we are here to serve you. If we can serve you better, let us know.

## PERSONAL AFFAIRS

The RAF Bentwaters Personal Affairs Office can advise you on a number of personal matters. Assistance is given to military personnel and their families in such areas as commercial and government insurance, casualty service benefits, voting, passports and visas, survivor benefit plan, retirement veterans' benefits and estate planning.



## AIR FORCE AID SOCIETY

The mission of the Air Force Aid Society (AFAS) is to better the morale of Air Force personnel and their dependents. In carrying out this mission, the AFAS may prove a helpful friend indeed, if you are suddenly faced with a real financial emergency.

Full or limited financial assistance may be provided in such cases as meeting costs of food, rent, utilities, emergency transportation of dependents, dependents' funeral and burial expenses, off duty education, and other unforeseen emergencies.

Non-receipt of pay, allotments, allowances or other financial difficulties may be the cause of being without sufficient funds to meet your needs.

In each instance, the AFAS office will review every case with you and determine if assistance can be rendered, whether it be a non-interest loan or an outright grant.

## FAMILY SERVICES

The Family Services Center is staffed by volunteer workers who are Air Force wives. They understand the problems of service life because they have experienced most of them. Family services is not a charity organization; it is an official Air Force function designed to assist military personnel and their families in any way possible.

Services include information concerning base activities and services; brochures on State-side bases, and a lending service where household items may be checked out on a 60-day loan basis while your household goods are in transit.

The volunteers work hand-in-hand with other agencies to see that newcomers are informed of base activities and services available to them. In case of emergency the volunteers are ready to help in any way possible.

The Family Services Center is in Building 240. If you have a problem, you are welcome to visit the center or telephone them at extension 2309. New volunteers are always welcome.

## PERSONAL AFFAIRS ORIENTATION COURSE

In keeping with the mission of informing the wives of military personnel on matters affecting the welfare of their families, the Personal Affairs Orientation Course is conducted at least once every six months. The agenda is tailored to inform you of subjects such as: The mission of the base, insurance, retirement, casualty assistance, commercial transportation, medical and dental care, education, legal assistance, survivor's benefits, recreation and the Air Force Aid Society.

It is recommended that each wife attend the course at least every three years in order to learn of any changes which may occur. Announcements of the course dates are made well in advance to allow sufficient time to make necessary arrangements to attend. Free nursery care is extended to each mother while she attends the course.

## AMERICAN RED CROSS

An American Red Cross representative is located at RAF Bentwaters. The purpose of the Red Cross here is to provide assistance to you and your dependents with financial aid for basic needs (food, clothing and shelter) in the event of an emergency situation; verification and doctors' reports on family members who are ill in the U.S.; travel and maintenance funds for military personnel on emergency leave and counseling and communication assistance with any problem that may arise.

Prior to departing the U.S., it is important to remind your immediate relatives to contact their local Red Cross representative in case of emergency. This will save considerable time if



emergency leave to the U.S. is required. Also be sure your relatives know your Social Security number, rank and to which squadron you are assigned.

#### LEGAL ASSISTANCE

Legal assistance at the twin bases is provided by the Office of the Staff Judge Advocate, Building 40, RAF Bentwaters. Attorneys are available to assist and advise you and your dependents on legal matters such as adoption, domestic problems, contracts, indebtedness, taxation, powers of attorney, leases, insurance, and wills.

Air Force lawyers will draft and execute documents for you to the maximum extent possible under regulations, and can attempt to solve problems arising from disputes with the civilian population (i. e. lease problems).

The Staff Judge Advocate's Office is firmly committed to the concept of Preventive Law, and strongly encourages all personnel to have all contracts and leases reviewed by an attorney before signing. Appointments are required in all but emergency situations and may be obtained by calling the Office of the Staff Judge Advocate.

#### RATIONING

Tobacco products, alcoholic beverages, gasoline and luxury items such as watches, cameras, binoculars and jewelry are rationed. Your squadron orderly room will provide you and your dependents with ration and luxury cards, enabling you to purchase these items.

Members of the U.S. Armed Forces and U.S. civilian employees of DoD are entitled to monthly gas rations, the amount depending upon the size of the car and how far one lives from the base. Enough will be allowed for one trip a day to and from the base. The vehicle must be properly registered and the road tax paid; it must be adequately covered by insurance, and the entitled person must have a valid driver's permit or license. Upon notification that your car has arrived at the port, you may obtain enough gas coupons to travel from the port to base.

#### FIREARMS

All newly assigned personnel, military or civilian, who have shipped firearms in either their hold baggage or household goods are forbidden by British law to take possession of these firearms until they have been properly registered by Security Police and British Police Authorities. British Customs will remove all imported firearms from hold baggage/household goods and store them at the Bentwaters Security Police armory until all registration requirements have been satisfied.

Firearms of a shotgun type may be maintained by personnel at their private residence either in base housing or local economy housing, after a British Shotgun Certificate has been obtained and all base registration requirements have been met. You are advised to obtain information concerning the Shotgun Certificate and base registration from the Security Police Pass and Registration Office prior to the arrival of your firearms in the U.K. All other types of firearms must be stored at either the Security Police Armory or the base Rod & Gun Club.

#### ARMY AND AIR FORCE EXCHANGE SERVICE

The Army and Air Force Exchange Service had its beginnings in England in 1943 and today operates more than 3,400 facilities in Europe, Africa and the Middle East. The Exchange strives to provide merchandise and services of necessity as well as convenience to military men, women and their dependents at prices they can afford.

AAFES must also generate reasonable earnings for the support of military welfare and recreational programs. This money is used in support of libraries, service clubs, youth activities, athletic programs and unit activities.



Exchange customers include active duty military personnel and their dependents, U.S. civilians employed on a full-time basis with the U.S. Government and their dependents, and personnel in other categories as specifically authorized by Headquarters U.S. Air Forces in Europe/U.S. Army Europe.

The twin base Exchange operates to serve the authorized patron. Products and services the exchange offers are numerous, with items ranging from household goods to hats. The Exchange is your local department store and drug store, plus much more, rolled into one.

Large self-service and delicatessen stores are also operated by the Exchange and are open for extended hours and offer tobacco, food, candy, beer, soft drinks, stationery and household cleaning items.

A modern sound center offers a wide variety of stereo equipment, records, tapes and camera equipment. Minor stereo repairs are carried out by a qualified technician.

An Exchange Furniture showroom at Bentwaters handles American and European furniture, rugs and nursery furniture.

The customer service counter at the main Exchange at Bentwaters gives individualized service, handles enquiries and problems and assists with special orders and requests, state-side mail orders to mention a few.

Bentwaters' main cafeteria offers a full meal service from breakfast to dinner. In addition it controls and supplies two snackmobiles, two school meal programs, one flightline snack bar and vending machines.

The following concessions are located at Bentwaters and Woodbridge: barber and beauty shops, laundry, dry cleaning, watch repair service, photograph developing and printing and television rentals. Car salesmen from the major American companies have sales offices in the main Community Area and orders are taken for both U.K. and U.S. delivery. In addition an automatic car wash service is located at Bentwaters.

Service stations are available at both bases and supply kerosene (paraffin) and two grades of gasoline. The service station can perform all lubrication work, tire changes, tune-ups, wheel balancing and minor repairs. The auto parts store at Bentwaters carries a large stock of standard parts and can supply on special request most of the parts not in stock.

#### COMMISSARY

RAF Bentwaters Commissary Store is located in the heart of the community area. Doors are open for business Tuesday through Saturday with over 3,000 line items offered for sale. Continuous research, comparison with U.S. market trends and manufacturer's representatives presentations on new products insure an item selection comparable to those of U.S. commissaries and super markets. In addition, monthly meetings of the New Item Selection Committee insure that the customer's desires are known to management and assist in making selection decisions.

The Commissary carries a good stock of non-perishable items in baby foods, canned fruits and vegetables, also paper products, similar to those items carried by Stateside supermarkets. Perishables stocked are poultry, fresh Scottish beef, dairy products, fresh fruit and vegetables and frozen foods. ID cards must be shown when in civilian attire prior to entry into the store.

#### BASE CHAPEL

Complete chapel programs are offered at both bases. Your chaplains invite you to participate in these programs and to enjoy the fellowship with others of your religious preference. Base nursery facilities are offered free for most activities of the chapel. Appointments for counseling



can be made by calling the Bentwaters Chapel, extension 2710, or Woodbridge Chapel, extension 6622.

The Roman Catholic program includes regular weekday and Sunday Masses, Catholic Council of Men, Council of Women, youth program and Catholic confessions and sacramental ministrations as provided by the Catholic Church for its members.

The Protestant program consists of regularly scheduled Sunday Worship services, religious education for all military and dependent personnel, Protestant Men, Women and Youth organizations. Regular Lutheran and Pentecostal services are held at Woodbridge.

Jewish personnel have services scheduled on the third Thursday of each month by the visiting Jewish chaplain.

A complete choral program is offered by both Catholic and Protestant programs. In addition many programs are available for the single airman.

#### THE DORMITORY

Every effort has been made to make the dormitory living conditions as comfortable as possible. There are a total of 14 dormitories on RAF Bentwaters and RAF Woodbridge. The furnishings in your room are all we have to offer at this time; however, new furnishings are programmed and during 1976-1977 approximately \$500,000 were devoted to dormitory furniture and appliances. Each resident can assist the Wing in upgrading the dormitory conditions by insuring proper care of existing equipment and room furnishings.

Problems in your dormitory requiring attention should be reported to your unit first sergeant or dormitory chief.

#### OFFICERS' OPEN MESS

The Officers' Open Mess is located at RAF Bentwaters with a bar annex at RAF Woodbridge. The main facilities include party rooms, ballroom, main dining room and main bar, casual bar and antique concessionaire. The Woodbridge Mess has a small casual bar only. Live entertainment is featured during the week at Bentwaters.

Squadron-sponsored parties, Wives' Club functions, and Anglo-American activities round out the social activities of the Officers' Mess.

#### OFFICERS' WIVES CLUB

Service wives who must relocate every three or four years and leave behind their friends and familiar surroundings know the value of the OWC. For here is an organization which will welcome newcomers to this American conclave, introduce them to British customs and culture, and solicit their help to launch a number of worthwhile social and welfare projects. The monthly club luncheons in the past have given members access to the latest fashions, and an interesting series of lectures. Other elements of the OWC's activities include sponsorship of the annual Merchant's Bazaar, a wide-spectrum Anglo-American community relations program, publication of a monthly club newspaper (Tea Leaves) and a fully developed recreational program.

#### NCO OPEN MESS COMPLEX

The Bentwaters and Woodbridge NCO Open Mess complex offers the services of one NCO Open Mess (the Phantom Club), one Top Four and one All Ranks Club. The open messes and annexes, in addition to the usual fare normally offered to Air Force personnel, schedule live entertainment for their members.

#### NCO WIVES' CLUB



and welfare work. The annual Anglo-American Tea, the two club-sponsored High School scholarships, the annual bake sale for the Association of the Blind, and the San Raphael tea for the handicapped, as well as the annual Parents and Teachers Welcoming Tea for dependent school teachers are examples of the activities to which the wives devote their energies.

#### AMERICAN EXPRESS

The U.S. Government-sponsored banking facility in the United Kingdom is the American Express Company (AMEXCO), which offers complete banking services to military and DAF civilian personnel.

AMEXCO checks may be written for either dollars or sterling (British currency). Sterling checks are the most convenient for paying rent, utility bills, etc. Checks drawn on U.S. banks are cashed in the Exchange, Open Messes and the Commissary. Dollars may be exchanged for sterling at the AMEXCO.

American currency and coins (except the U.S. penny which is not used at USAF bases in Britain) are used for all transactions with authorized U.S. Government agencies. Sterling must be used in transactions with British civilians, firms, etc.

AMEXCO also operates a travel agency on Bentwaters and sells both car and home insurance.

#### CABLES

Telegrams and cables may be sent from any British Post Office or from the American Express Company on base. Average rates are 25 cents per word.

#### TRANSATLANTIC TELEPHONE CALLS

Telephone calls to the U.S. can be made from private telephones or booked through the Service Club on base. The average cost of a call from here to the U.S. is \$2 per minute.

#### CREDIT UNION

A branch of the Keesler AFB, Mississippi, Credit Union is located at RAF Bentwaters. This organization provides savings and loan programs comparable with stateside credit union operations.

#### AUTOMOBILE INSURANCE

Automobile insurance is sold daily by various companies located on base and in the surrounding community.

#### LIBRARY

Air Force library facilities are available at Bentwaters. The library generally is comparable to a small public library in the U.S., both in service and materials provided for adults and children.

A wide variety of popular and technical magazines are received regularly. Patrons are assured of current and attractive titles which are frequently enjoying simultaneous popularity in the United States.

Reading materials to support reference, study and do-it-yourself interests are also available.



## ATHLETIC FACILITIES

The twin bases' athletic program offers a competitive and varied sports calendar the year round. The Bentwaters gymnasium offers ample opportunity to sportsmen and women. Facilities include basketball, racquetball, handball, volleyball and badminton courts. The gym also offers separate ladies' and men's sauna baths, exercise and weight lifting rooms, showers and dressing rooms. The athletic facilities at Woodbridge are shared with the High School. Facilities include varsity football field, soccer field, tennis courts, and softball fields. Our varsity team have a reputation for being the "horns to beat" in the U.K. and our record of U.K. and USAFE championships prove it.

## INTRAMURALS

RAF Bentwaters/Woodbridge operates a full range of intramural sports including flag football, basketball, volleyball, handball, paddleball, bowling, fast and slow pitch softball, golf and tennis.

## SUPPLY SERVICES

Supply Services is located at RAF Bentwaters. Items for camping, picnicking, golf and other outdoor interests are available at a small fee. Most items can be rented on an unlimited time basis, except for some items that have a 72-hour limit due to heavy demand. Also, Supply Services has info on camping and backpacking in Europe.

## GOLF COURSES

If you play the game of golf and would like to continue the sport, you have come to the right spot. Within a half hour's drive of either base, there are no fewer than five 18-hole courses. Annual memberships are available at most courses.

Woodbridge Golf Course: 6,327 yards, par 70. Due to the welcome extended to American servicemen, the fine cooperation received from staff and members, and its proximity (it is situated between the two bases - within three miles of each), it has come to be regarded as the "home course" of the 81st Tactical Fighter Wing golfers. A heathland course with an abundance of heather and gorse, it is known for its natural beauty. Other nearby courses are:

Ipswich Golf Course: 6,405 yards, par 70  
 Felixstowe Golf Course: 6,276, par 73  
 Aldeburgh Golf Course: 6,353, par 72  
 Rushmere Golf Club: 6,200 yards, par 69

## RECREATION CENTER

The Bentwaters Recreation Center, with a game room for pool and ping pong, a large TV lounge, a music room, a combination ballroom and stage, and an information and equipment check-out counter, offers a diversified recreation program six days a week. Special activities



This Universal Gym is only one of many items available at the Bentwaters gymnasium.



An active sports program at the twin bases includes varsity football and basketball competitions with other bases.



include dances, a drama workshop, contests, discos and clubs: darts, pool, ping pong, and auto. A comprehensive tour program is offered through the Travel Center with tours and travel information on excursions to places in England and the Continent; and also tour information for plane, rail and auto. A telephone center offers both stateside and continental telephone service.

#### AUTO HOBBY SHOP

The Auto Hobby Shop is located at RAF Bentwaters, and offers a complete line of tools and accessories for the automotive buff. The shop has eleven stalls, nine of which are work stalls, one lube rack and one spray painting booth. One of the work stalls is equipped with a hoist. There is an outdoor wash area that can service two cars at a time. Some special tools available are a steam jenny, vacuum cleaner, drum machine, valve grinder, fast and slow battery charger, several hydraulic jacks and many others. For reference there is a complete library of books on all models of cars.

#### ARTS AND CRAFTS SHOPS

The twin base complex has two arts and crafts shops, one at Woodbridge and one at Bentwaters. The shop at Woodbridge is the ceramics shop, complete with kilns, molds and accessories for any type of ceramics you wish to work with. A Wood Hobby shop at Bentwaters provides all the equipment needed to fill your woodworking desires. Some of the equipment available includes a table saw, jig saw, band saw, wood lathe, jointer, planer, sander and various assorted wood chisels, files, rasps, etc. Each section is backed by a complete line of accessories and all materials can be purchased from the sales store in the same building. Also in the Arts and Crafts Center at Bentwaters are leathercraft, tape dubbing, brass rubbing and heat sealing facilities. Materials, accessories and advice are readily available, including a custom framing service. All Hobby Shops have an extensive resale outlet.

#### CAMELOT THEATER

The Camelot Theater at Bentwaters is a new structure, with a seating capacity of 500 viewers. Movies are shown nightly, a late show is featured on Saturday night, and on Sundays the movie is shown at three different scheduled times. Light snacks and plenty of popcorn are on sale at all showings.

#### BOWLING LANES

Bowling is one of the more popular off-duty enjoyments at the twin bases. The Woodbridge Lanes have four alleys, and the Bentwaters Lanes have six alleys. A variety of leagues are active at the twin bases with a varsity bowling team competing in the U. K. Traveling League.

#### AYA

The hub of most youth activities at the twin bases is the American Youth Association (AYA) Program. Monitored by a youth advisory council and assisted by a professional AYA Director, the program covers the whole scope of year-round military and DAF Civilian youth activities for dependents, ages 6 to 18.

The varied programs include tours, dances, field trips, indoor and outdoor sports and a vigorous scouting program for both boys and girls.

#### ROD AND GUN CLUB

A combined Bentwaters/Woodbridge Rod and Gun Club has a large membership actively engaged in many field and stream sports. A skeet range is located near the local club. The club also has leased an area adjacent to the base as a hunting preserve for pheasant, partridge and deer shooting in season. Sporting goods available include fishing equipment and firearms.



## SQUARE DANCE CLUB

The "Swingin' 8s" square dance club meets regularly and enjoys a large membership of both British and Americans. There are a great many square dance clubs in the United Kingdom and consequently the "Swingin' 8s" yearly calendar is filled with interesting events. Square dance classes are held twice a year, March and September, at Woodbridge, for new members, and the club is also kept busy each summer giving exhibitions on base and in the local communities. This is one of the most successful clubs on base. Further information can be obtained from either the Community Relations Adviser or the Information Office.

## AERO CLUB

The Bentwaters/Woodbridge Aero Club is located at RAF Woodbridge. Boasting a full staff of qualified personnel in all sections, the club has three aircraft - two Cessna 150s and one Cessna 172 four-seater cross-country plane. The club provides a ground school and is in the process of establishing a ground instrument school. Aero Club members fly to many places including France, Germany, Spain and Malta. The club also has social functions with the local East Anglian Flying Club.

## FIRE SAFETY AND YCU

The 81st Tactical Fighter Wing Fire Department extends a cordial welcome to you and sincerely hopes that your stay here will be a fire safe and enjoyable one.

To aid you in this, the fire prevention personnel encourage you and your dependents to take every action to assure that you are fully familiar with your surroundings. Also everyone should know just what procedures to follow should you be faced with a fire or other emergency. If your home does not have a phone, use a neighbor's to report a fire or emergency. The numbers you should know are as follows:

RAF Woodbridge and RAF Bentwaters base housing: Ext 217

Fire Reporting on base: Ext 117

Off base leased housing and economy housing: Dial 999 and ask for the service you desire: fire, hospital or police. By dialing 999, the British Fire Department will respond to your house off base. If you do have a fire in off base leased housing, you are required to notify the base fire department, extension 2241.

The main causes of fire in family quarters are the careless use and disposal of smoking materials and over heating cooking utensils left unattended on the stove. The best solution to prevent these wasteful and tragic fires is to establish a set of rigid and safe fire prevention rules and insure that everyone follows these standards.

Personnel living in the dormitories are reminded that the use of coffee pots, hot plates, etc., are not authorized in the barracks, unless approval is granted by the Base Fire Marshall.